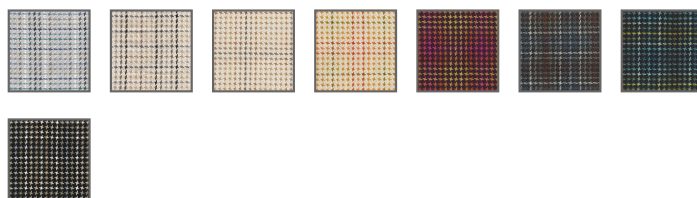


©2017 BRENTANO, INC. PATTERN AND DESIGN

Morning Star

7300 Morning Star

Morning Star's 8 stunning ombre colorways capture the warm hues of an early spring sky and the settling tones of a wintry dusk. Morning Star's handsome look is achieved by framing vibrant threads with rows of float yarns to capture the changing colors. These are then woven to achieve an understated graphic repeat that, when upholstered, reads as a very restrained lightweight check. Eligible to be treated to pass NFPA 701, this gorgeous 54" pattern comes in 8 rich colorways to make an unforgettable statement piece for any residential application or as a striking accent in a hospitality or commercial setting.



FABRIC INFORMATION

ACT Symbols:



Collection:

Sovereign Collection

Width:

54" [137 cm]

Contents:

68% Viscose, 32% Linen

Finish:

Repeat:

Approx. V 5-3/8" - H 5-3/8"

Cleaning:

[Fabric Care](#) » S (Solvent)

Usage:

Drapery, Upholstery

Weight:

21 oz [595.35 g/m.]

Note:

TECHNICAL SPECIFICATIONS

Wear Test:

15,000 Double Rubs (Wyzenbeek, Cotton Duck)

Pilling:

Class 2.5 (ASTM D3511)

Fire Resistance:

Can be treated to pass NFPA 701 Small Scale, Can be treated to pass California Bulletin 117: 2013, Can be treated for NFPA 701 Test 1

Crocking:

Dry: 4.5, Wet: 2.5(AATCC 116-2013)

Breaking Strength:

Warp: 194.6 lb Fill: 193.1 Lb

Lightfastness:

60 Hours Class 4.5 (AATCC 16)