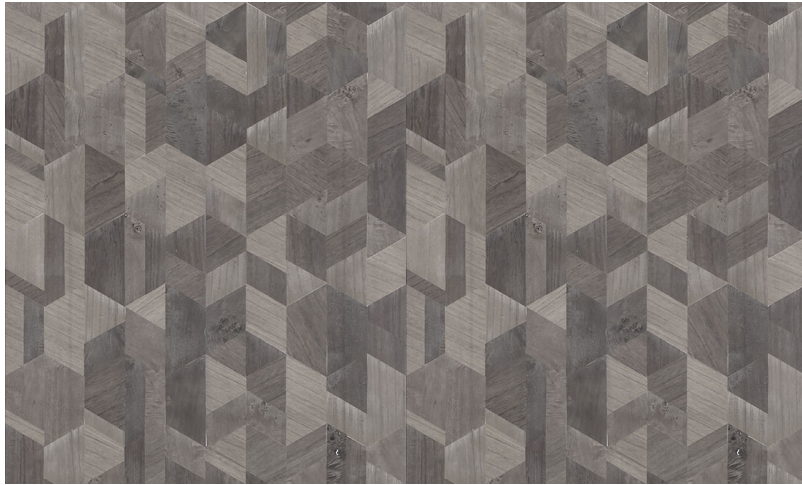


Spec Sheet



Collection

Timber

Pattern

Formation

Reference

38200

Description

Wallcovering made of Paulownia wood, with visible grains and traces of knots, inlaid on metal foil

Dimensions

Width 91.44 cm (36.00"), sold by the linear metre/yard

Repeat

Free match, respecting the design height of 31.50 cm (12.40")

Adhesive

Adhesive for non-woven wallcovering like Arte Clearpro or 100% dispersion adhesive

Fire retardancy

B-s1, d0 / Class A

Light resistance

Good lightfastness

Care

Washable

How to paste

Moisten the product, paste the wall

How to remove

Strippable