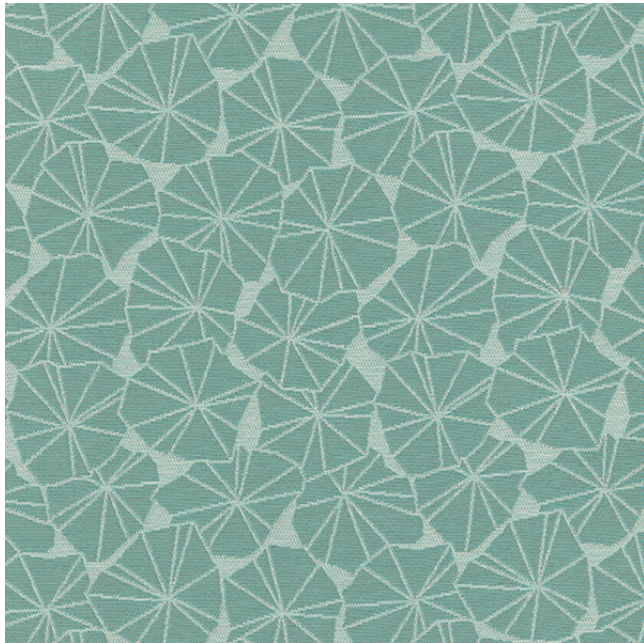


BRENTANO™

WWW.BRENTANOFABRICS.COM

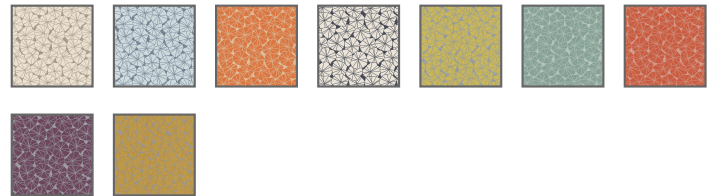


©2017 BRENTANO, INC. PATTERN AND DESIGN

Lily Pond

8138 Lily Pond

Incorporating both geometric and organic elements in its design, Lily Pond is an eye-catching 54" width indoor/outdoor upholstery that adds a lively touch to any application. Made with Bella-Dura Solution-Dyed Polypropylene, it resists outdoor elements and is protected with a Greenshield finish along with being bleach cleanable. Lily Pond is extremely durable at 100,000 double rubs (Wyzenbeek, Wire Screen) and its 9 invigorating colorways easily coordinate with fellow indoor/outdoor patterns Channel and Stillwater.



FABRIC INFORMATION

ACT Symbols:



Collection:

Clearwater Collection

Width:

54" [137 cm]

Contents:

100% Bella-Dura Solution-Dyed Polypropylene

Finish:

Greenshield™

Repeat:

Approx. V9" - H 6-7/8"

Cleaning:

[Fabric Care](#) » W/S/B 1:10 (Water/Solvent/Bleach)

Usage:

Indoor/Outdoor Upholstery

Weight:

16 [453.5 g/m.]

Note:

Bacterial Resistant

TECHNICAL SPECIFICATIONS

Wear Test:

100,000 Double Rubs (Wyzenbeek, Wire Screen)

Fire Resistance:

Passes California Bulletin 117:
2013ses California Bulletin 117E
UFAC Class 1 NFPA 260 Class 1

Lightfastness:

600 Hours Class 4 (AATCC 16)

Pilling:

Class 4.5 (ASTM D3511)

Crocking:

Dry: 4.5 Wet: 4.5 (AATCC 116-2013)

Breaking Strength:

Warp: 390 lb Fill: 480 lb ASTM D 5034 (Grab)

Seam Slippage:

Warp: 92.0 lb Fill: 102.3 lb (ASTM D4034)