

ASTRO PRODUCT SPECIFICATIONS

Application

Wallcovering

Content

100% Polyethylene

Backing

Acrylic

Width

54"

Repeat

Random Match

Roll Length

App. 40yds

Performance

- Type II Wallcovering Properties
- Abrasion: Exceeds 200,000+ rubs (ASTM D4157 Wyzenbeek)

Flammability

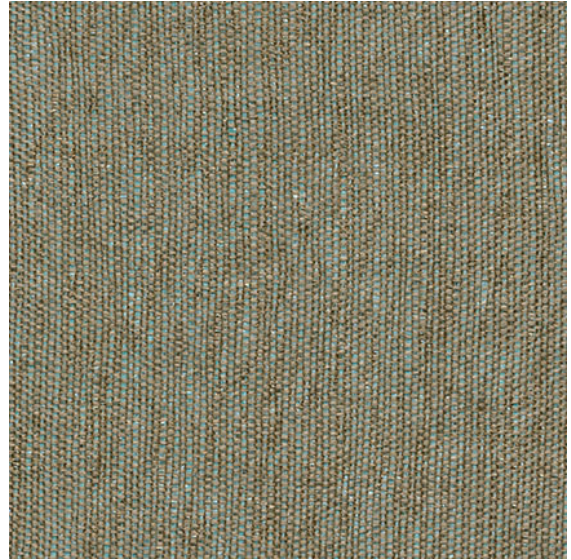
ASTM E-84 Class A

Cleaning

W/S, Bleach (10:1)

Environmental

- Passes California Section 01350
- PVC/Phthalate Free



Resort



Pristine



Eggshell



Cashew



Basket



Mercury



Malt



Canvas



Field



Sea Mist



Pottery



Midnight

Warranty

Please refer to our Terms of Sales for warranty information.
- This term and any other corresponding data refer to typical performance in the test indicated and should not be construed to imply the behavior of this material, or any other material, under actual fire conditions.

Mold & Mildew

This product is intended for use in properly built and maintained buildings that are not subject to moisture accumulation in a wall or wall cavity at any time. Application must follow current installation guidelines.