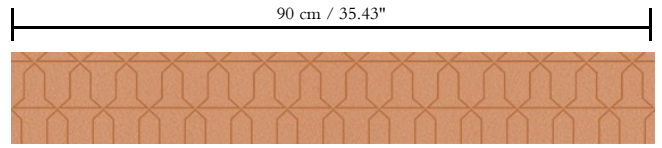


Spec Sheet



Collection

Metal X Signum

Pattern

Domus

Reference

37613

Composition

Metallic wallcovering on non-woven backing

Description

Wallcovering made of real metal foil with an oxidised effect and a print on matching tones, finished with a layer of satin lacquer or glass beads

Dimensions

Width 90 cm (35.43"), sold by the linear metre/yard

Repeat

Straight match 12.8 cm (5.04")

Adhesive

Adhesive for non-woven wallcovering like Arte Clearpro or 100% dispersion adhesive

Fire retardancy

B-s1, d0 / Class A

Light resistance

Good lightfastness

Care

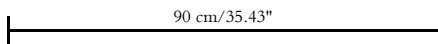
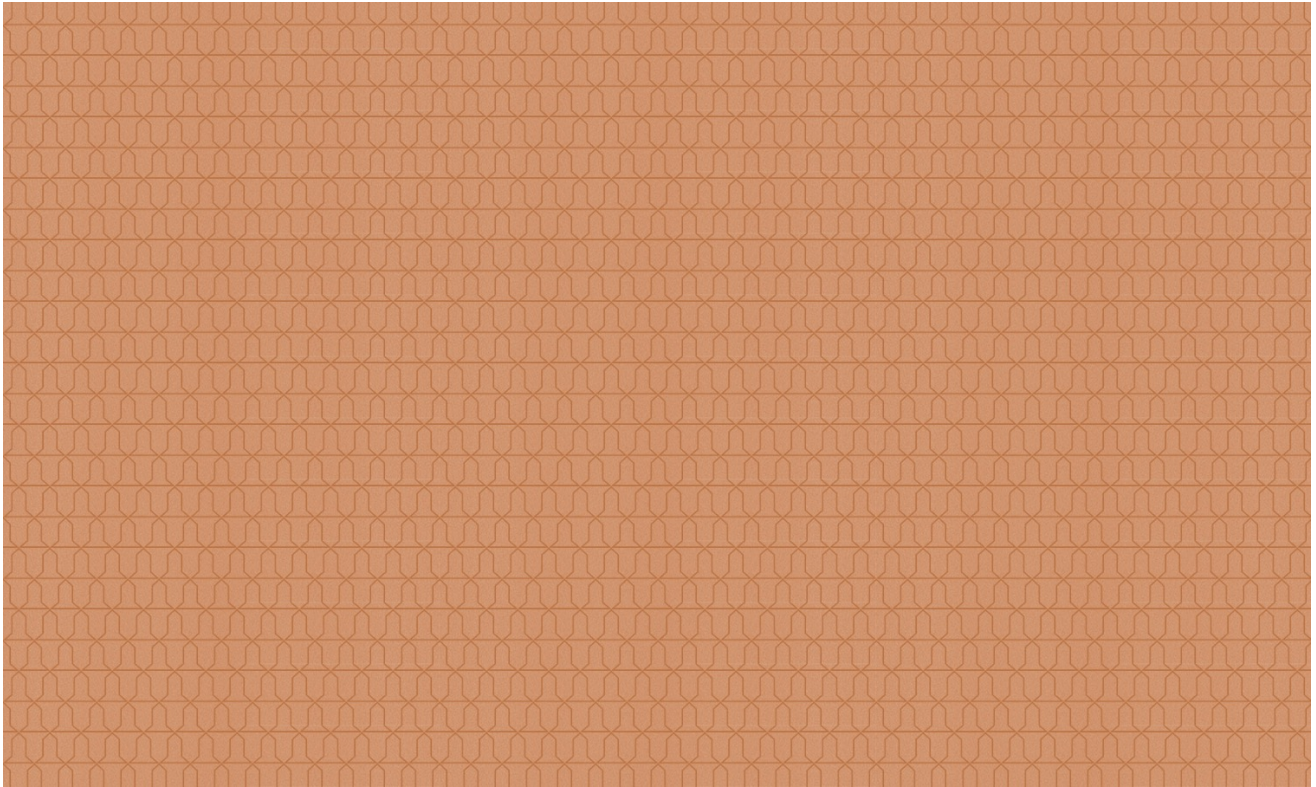
Washable

How to paste

Moisten the product, paste the wall

How to remove

Strippable



Collection

Metal X Signum

Pattern

Domus

Reference

37613

Remark

During production, the metal foil goes through an intensive process that was developed especially for this collection. It is coloured in such a way that the wallcovering takes on the nuances of an authentic metal look. Finally, the patterns are finished with a thin layer of satin paint or glass beads. It is normal that the glass beads that do not touch the adhesive layer, come loose. This has no impact on the final result. The glass beads in the adhesive layer adhere firmly and form the pattern. Matching plains can be found in collection Metal X