

# Spec Sheet

## Collection

Metal X Signum

## Pattern

Quadra

## Reference

37662 (glass beads)

## Composition

Metallic wallcovering on non-woven backing

## Description

Wallcovering made of real metal foil with an oxidised effect and prints on matching tones, some finished with a layer of satin lacquer or glass beads

## Dimensions

Width 90 cm (35.43"), sold by the linear metre/yard

## Repeat

Straight match 64 cm (25.20")

## Adhesive

Adhesive for non-woven wallcovering like Arte Clearpro or 100% dispersion adhesive

## Fire retardancy

B-s1, d0 / Class A

## Light resistance

Good lightfastness

## Care

Washable

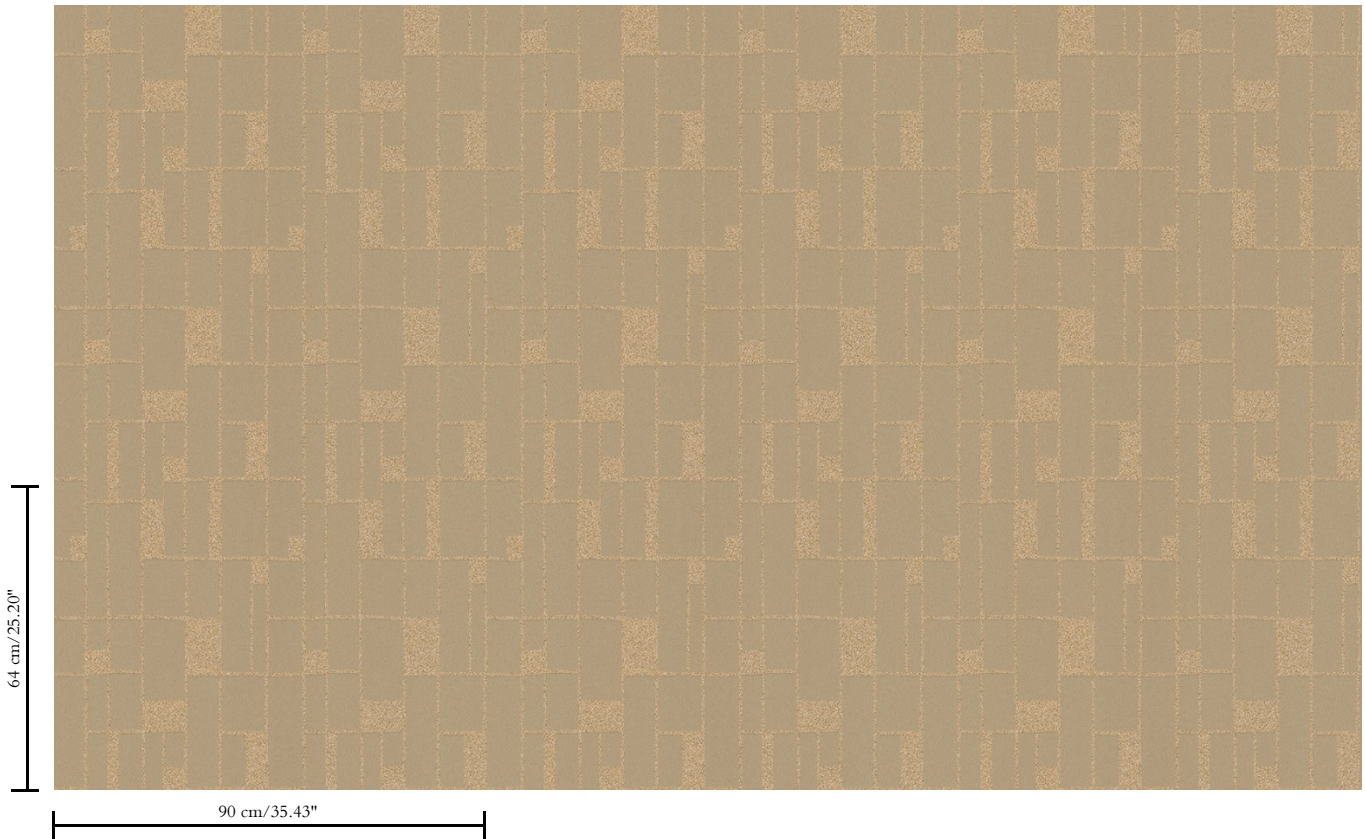
## How to paste

Moisten the product, paste the wall

## How to remove

Strippable





Collection

Metal X Signum

Pattern

Quadra

Reference

37662 (glass beads)

Remark

This wallcovering is made of real metal foil. During production, the metal foil goes through an intensive process that was developed especially for this collection. It is coloured in such a way that the wallcovering takes on the nuances of an authentic metal look. Finally, the patterns are embossed on the wallcovering and finished with a thin layer of satin paint or glass beads. It is normal that the glass beads that do not touch the adhesive layer, come loose. This has no impact on the final result. The glass beads in the adhesive layer adhere firmly and form the pattern. Matching plains can be found in collection Metal X