

# BRENTANO™

WWW.BRENTANOFABRICS.COM

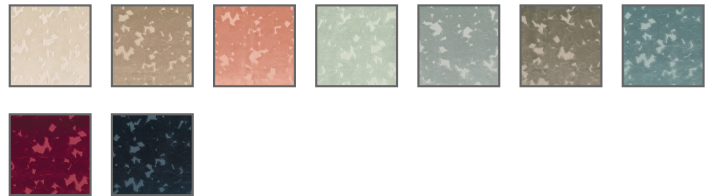


©2017 BRENTANO, INC. PATTERN AND DESIGN

Samara

## 4234 Samara

Pulling inspiration from Maple Fall, an early original design by Design Director Iris Wang, **Samara** balances beauty and nature in this stunning jacquard velvet. The 54" width large-scale pattern of Japanese maple leaves creates a pixelated cutout that highlights the unique weave underlying the velvety pile to create a subtle shading effect. "The textile mimics the way the light would hit the leaves on the tree," states Iris Wang. "Samara's pile is woven to move in three directions to create a beautiful shadow effect adding depth and dimension to the striking colors and richness of the velvet." Samara's beauty extends well beyond its abstract pattern, with over 75,000 double rubs and Brentano's Tri-sistant finish, the densely woven textile features supreme durability to withstand high-traffic environments. In 9 romantic colorways including Cranberry, Midnight and Blush, Samara is the optimal choice for opulent interiors. \*The slub yarns that appear are inherent to the design.



### FABRIC INFORMATION

ACT Symbols:



Collection:

No. 50 Collection

Width:

54" [ 137 cm ]

Contents:

Pile: 100% Cotton; Overall: 86% Cotton, 14% Polyester

Finish:

Tri-sistant

Repeat:

Approx. V 20-1/2" - H 14-1/4"

Cleaning:

[Fabric Care](#) » W/S (Water/Solvent)

Usage:

Upholstery

Weight:

29 oz [ 899.11 g/m. ]

Note:

### TECHNICAL SPECIFICATIONS

Wear Test:

Over 75,000 Double Rubs (Wyzenbeek, Cotton Duck)

Pilling:

Class 5.0 (ASTM D3511)

Fire Resistance:

Can be used with a barrier cloth in order to pass Cal 117: 2013 Sec 2 in California

Crocking:

Dry: 4.5 Wet: 3.5 (AATCC 116-2013)

Breaking Strength:

Warp: 103 lb Fill: 175 lb

Lightfastness:

40 Hours Class 4 (AATCC 16)

Seam Slippage:

Warp: 91.1 lb Fill: 97.4 lb (ASTM D4034)

Textiles by BRENTANO, Inc. 260 Holbrook Drive, Wheeling, IL 60090 USA T: 847.657.8481

customerservices@brentanofabrics.com  
© 2021 Brentano Fabrics