

# Spec Sheet

Collection

Wildwalk

Pattern

Gallop

Reference

28023 (high gloss metal foil)

Composition

Non-woven wallcovering

Description

A rhythmic pattern that reminds of the zebra's hoofprints, reminiscent of a combination of hand-cut cork fragments

Dimensions

Width 90 cm (35.43"), sold by the linear metre/yard

Repeat

Free match, respecting the design height of 21.30 cm (8.40")

Adhesive

Adhesive for non-woven wallcovering like Arte Clearpro, or Metyl Special (200 g in 4 l of water) with the addition of 20% PVA adhesive

Fire retardancy

B-s1, d0 / Class A

Light resistance

Good lightfastness

Care

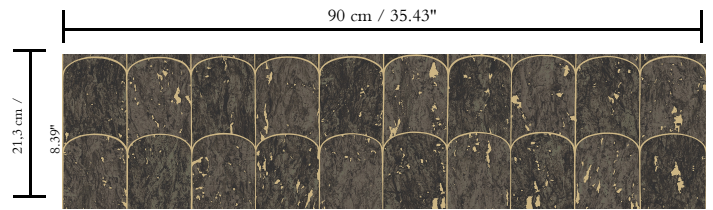
Washable

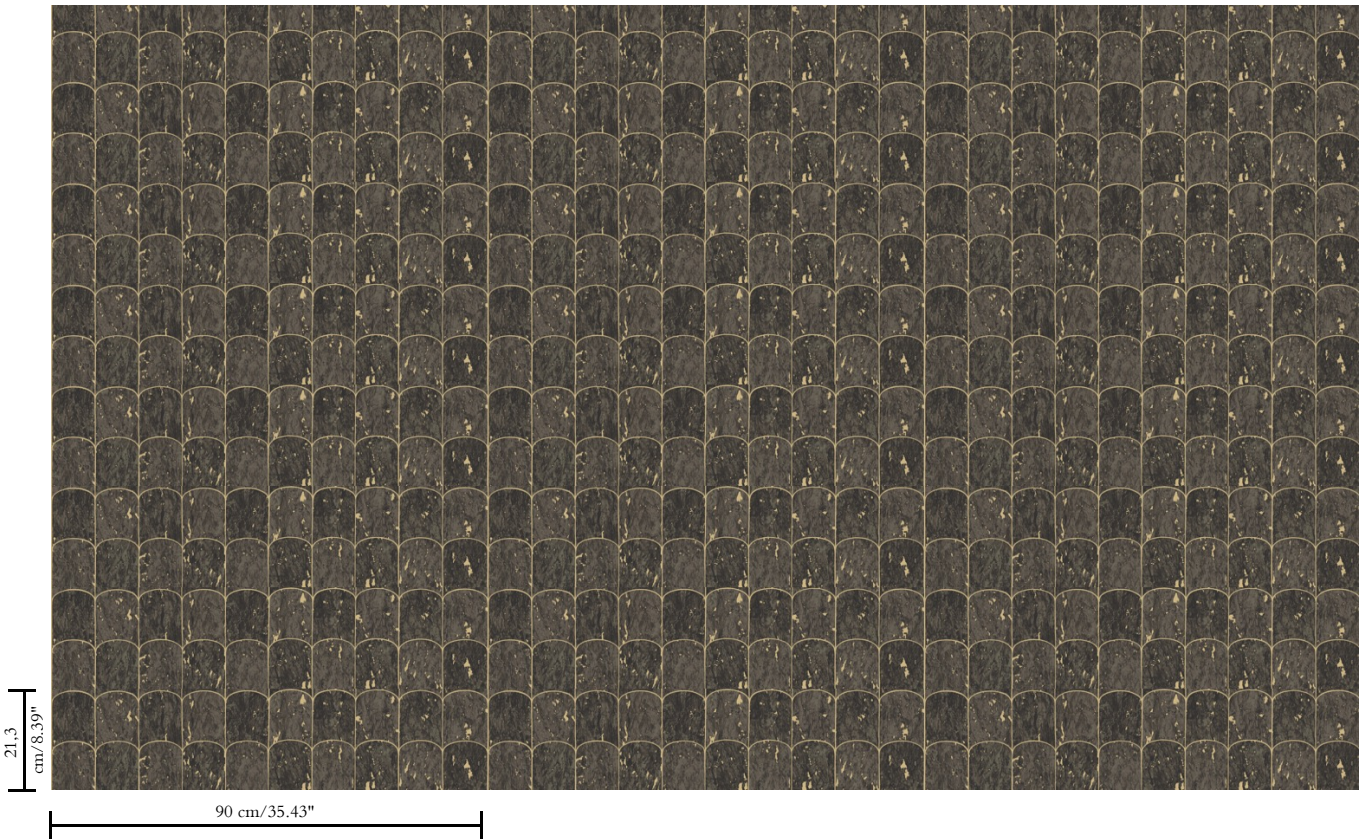
How to paste

Paste the wall

How to remove

Strippable





Collection

Wildwalk

Pattern

Gallop

Reference

28023 (high gloss metal foil)

<https://www.arte-international.com/en/collections/wildwalk/gallop/28023-high-gloss-metal-foil>