

BRENTANO™

WWW.BRENTANOFABRICS.COM

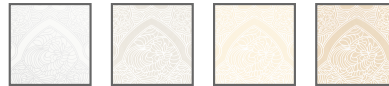


©2017 BRENTANO, INC. PATTERN AND DESIGN

Arabesque

3418 Arabesque

Arabesque's artistic design consists of a rhythmic pattern of scrolling and interlacing tendrils. In a simplified version of the upholstery pattern Meiping, the 59" drapery is as light and airy as its namesake. The 100% polyester yarns are FR treated with a unique formula that maintains the integrity of the yarns and Arabesque passes both NFPA 701 and British Standards for commercial drapery (BS 5867: 2008 Part 2 Type B). Offered in a soft palette of four exquisite neutrals – Crescent, Tendril, Petal and Scroll – Arabesque is a breath of fresh air for residential, hospitality and commercial interiors.



FABRIC INFORMATION

ACT Symbols:



Collection:

Ceramic Collection

Width:

59" [150 cm]

Contents:

100% Polyester

Finish:

FR Treated

Repeat:

Approx. V 28-1/4" - H 14-3/4"

Cleaning:

[Fabric Care](#) » S (Solvent)

Usage:

Drapery

Weight:

2.25 oz [62.01 g/m.]

Note:

TECHNICAL SPECIFICATIONS

Wear Test:

Crocking:

Fire Resistance:

Passes NFPA 701 Small Scale, IMO
FTPC Part 7 Drapery, BS 5867-2:
2008 Type B

Seam Slippage:

Warp: 10.1 lb Fill: 13.0 lb (ASTM
D434)

Lightfastness:

60 Hours Class 4.5 (AATCC 16)