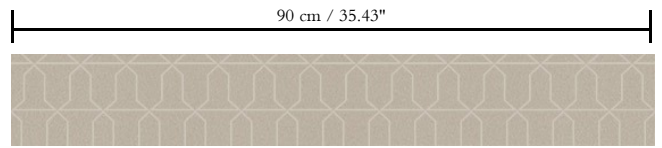


# Spec Sheet



## Collection

**Metal X Signum**

## Pattern

**Domus**

## Reference

**37611 (glass beads)**

## Composition

**Metallic wallcovering on non-woven backing**

## Description

Wallcovering made of real metal foil with an oxidised effect and a print on matching tones, finished with a layer of satin lacquer or glass beads

## Dimensions

Width 90 cm (35.43"), sold by the linear metre/yard

## Repeat

Straight match 12.8 cm (5.04")

## Adhesive

Adhesive for non-woven wallcovering like Arte Clearpro or 100% dispersion adhesive

## Fire retardancy

B-s1, d0 / Class A

## Light resistance

Good lightfastness

## Care

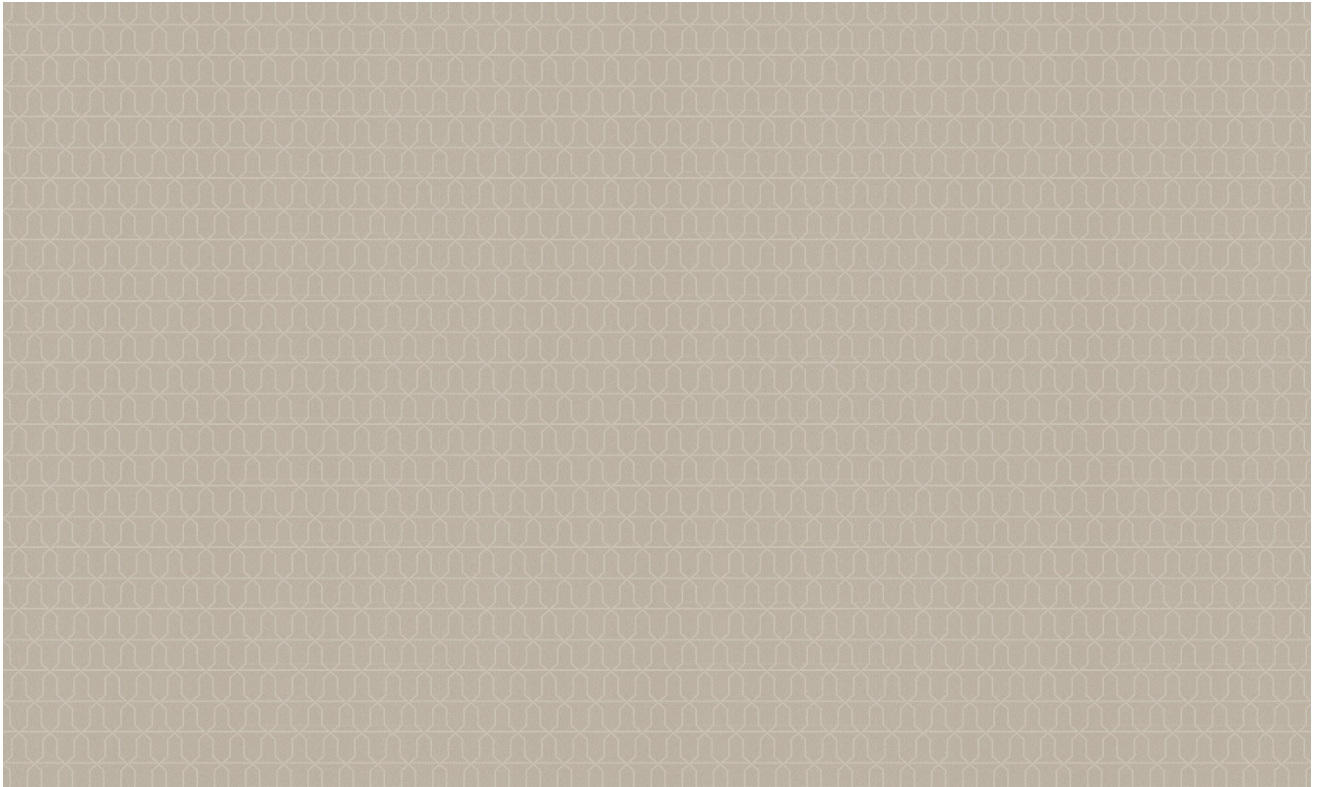
Washable

## How to paste

Moisten the product, paste the wall

## How to remove

Strippable



90 cm/35.43"

Collection

Metal X Signum

Pattern

Domus

Reference

37611 (glass beads)

Remark

During production, the metal foil goes through an intensive process that was developed especially for this collection. It is coloured in such a way that the wallcovering takes on the nuances of an authentic metal look. Finally, the patterns are finished with a thin layer of satin paint or glass beads. It is normal that the glass beads that do not touch the adhesive layer, come loose. This has no impact on the final result. The glass beads in the adhesive layer adhere firmly and form the pattern. Matching plains can be found in collection Metal X