

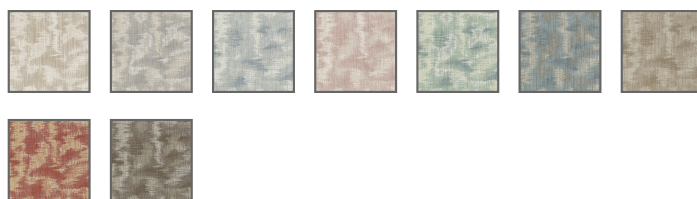


©2017 BRENTANO, INC. PATTERN AND DESIGN

Hannoki

## 9640 Hannoki

Emulating the movement of a water's surface, the blissful design of Hannoki began as an original painting by Founder and Design Director Iris Wang, inspired by the sights of her travels to Japan. Available in 9 soothing colorways, including a fresh green and crisp blues, pull the ethereal beauty of a woodland waterfall into your interiors. With a linen and viscose content and 30,000 double rubs (Wyzenbeek, Cotton Duck) and an optional applied Tri-sistant finish, this 54" fabric is a lovely choice for residential upholstery or alternatively, it also makes a stunning and graceful drapery.



### FABRIC INFORMATION

ACT Symbols:

Collection: Clearwater Collection

Width: 54" [ 137 cm ]

Contents: 50% Linen, 36% Viscose, 8% Polyester, 6% Nylon

Finish: Option: Tri-sistant finish can be applied

Repeat:

Appro. V 23-3/4" - H 28-1/2"

Cleaning:

[Fabric Care](#) » S (Solvent)

Usage:

Drapery, Light Upholstery

Weight:

14 oz [ 396.8 g/m. ]

Note:

### TECHNICAL SPECIFICATIONS

Wear Test: 30,000 Double Rubs (Wyzenbeek, Cotton Duck)

Seam Slippage:

Warp: 90.9 lb Fill: 85.9 (ASTM D434)

Fire Resistance: Passes California Bulletin 117: 2013  
UFAC Class 1 NFPA 260 Class 1,  
Can be treated to pass NFPA 701  
Test 1

Lightfastness: 60 Hours Class 4 (AATCC 16)