

## SOLITAIRE PRODUCT SPECIFICATIONS

### Application

Upholstery

### Content

Face - 100% Polyurethane

Middle - 100% Polyester

### Backing

100% Polyester

### Finish

Graffiti-Free®

### Width

52"

### Repeat

App. 3/8" H, 3/8" V

### Roll Length

App. 20yds

### General Characteristics

- Abrasion: 100,000+ double rubs (ASTM D4157 Wyzenbeek)
- Hydrolysis: 10+ weeks (ISO 1419)
- Colorfastness to Crocking: Grade 5 (AATCC 8)
- Colorfastness to Light: 200+ hours (AATCC-16)
- Tearing Strength (ASTM D2262)
- Adhesion of Coating (ASTM D751)
- Meets all ACT Heavy Duty Performance Guidelines

### Flammability

CA Bulletin 117-2013; UFAC/NFPA-260; IMO A652 (16) 8.2

### Cleaning

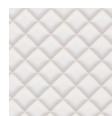
W/S, Bleach Cleanable (4:1)

### Environmental

- Healthier Hospitals Compliant
- DMF-Free
- PVC/Phthalate Free
- No added FR/Anti-Bacterial



Mineral



Snow



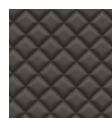
Chardonnay



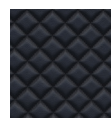
Bark



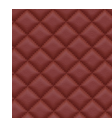
Terra



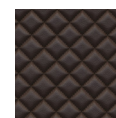
Smoke



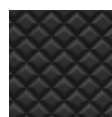
Ink



Fierce



Mink



Black

### Warranty

Please refer to our Terms of Sales for warranty information.

- Multiple factors affect fabric durability and appearance retention, including end-user application and proper maintenance.

Wyzenbeek results above 100,000 double rubs have not been shown to be a reliable indicator of increased fabric lifespan.



ACT® Registered Certification Marks