

## THALIA PRODUCT SPECIFICATIONS

**Application**  
Upholstery

**Content**  
100% Polyurethane

**Backing**  
100% Polyester

**Finish**  
Graffiti-Free®

**Width**  
54"

**Repeat**  
N/A

**Roll Length**  
App. 50yds

### General Characteristics

- Abrasion: 200,000+ Double Rubs (ASTM D4157 Wyzenbeek)
- Hydrolysis: 10+ weeks (ISO 1419)
- Colorfastness to Crocking: Grade 5 (AATCC 8)
- Colorfastness to Light: 200+ hours (AATCC-16)
- Tearing Strength (ASTM D2262)
- Adhesion of Coating (ASTM D751)
- Meets all ACT Heavy Duty Performance Guidelines

### Flammability

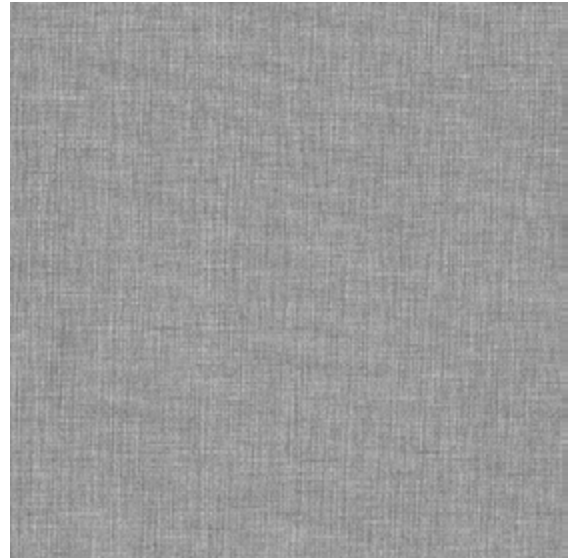
CA Bulletin 117-2013; UFAC/NFPA-260; IMO A652 (16) 8.2

### Cleaning

W/S, Bleach (4:1)

### Environmental

- Healthier Hospitals Compliant
- DMF-Free
- PVC/Phthalate Free
- No added FR/Anti-Bacterial



Silver



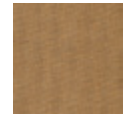
Milkweed



Hay



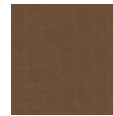
Flax



Karat



Tangerine



Sequoia



Espresso



Slate



Wave



Pacific

### Warranty

Please refer to our Terms of Sales for warranty information.

- Multiple factors affect fabric durability and appearance retention, including end-user application and proper maintenance.

Wyzenbeek results above 100,000 Double Rubs have not been shown to be a reliable indicator of increased fabric lifespan.



ACT® Registered Certification Marks