

W A V E L E N G T H P R O D U C T S P E C I F I C A T I O N S

Application
Upholstery

Content
Face - 100% Polyurethane
Middle - 100% Polyester

Backing
100% Polyester

Finish
Graffiti-Free®

Width
52"

Repeat
App. 6 7/8" H, 1 1/4" V

Roll Length
App. 20yds

General Characteristics

- Abrasion: 100,000+ double rubs (ASTM D4157 Wyzenbeek)
- Hydrolysis: 10+ weeks (ISO 1419)
- Colorfastness to Crocking: Grade 5 (AATCC 8)
- Colorfastness to Light: 200+ hours (AATCC-16)
- Tearing Strength (ASTM D2262)
- Adhesion of Coating (ASTM D751)
- Meets all ACT Heavy Duty Performance Guidelines

Flammability

CA Bulletin 117-2013; UFAC/NFPA-260; IMO A652 (16) 8.2

Cleaning

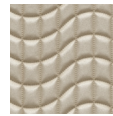
W/S, Bleach Cleanable (4:1)

Environmental

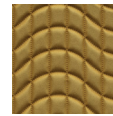
- Healthier Hospitals Compliant
- DMF-Free
- PVC/Phthalate Free
- No added FR/Anti-Bacterial



Matcha



Linen



Honeycomb



Palladium



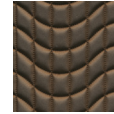
Persimmon



Charcoal



Elk



Dk. Espresso



Sapphire

Warranty

Please refer to our Terms of Sales for warranty information.

- Multiple factors affect fabric durability and appearance retention, including end-user application and proper maintenance.

Wyzenbeek results above 100,000 double rubs have not been shown to be a reliable indicator of increased fabric lifespan.



ACT® Registered Certification Marks